

NEW ZEALAND INSTITUTE OF ENGLISH

Welcome to the New Zealand Institute of English!

The New Zealand Institute of English is a warm and friendly school in the centre of Wellington city, New Zealand's capital city. We have many different English language courses for all levels of learner from beginners up to advanced students. The New Zealand Institute of English started in 1996 and is approved by the New Zealand government.

Our teachers are all well-qualified and experienced. We have small classes (maximum 10 and average of 6-7 students per class) which means that you can have more individual attention and help. The classes are designed to involve speaking, listening, reading and writing and to combine classroom study with lots of speaking practice. Classes are varied and fun and there are a lot of opportunities for International students to talk with New Zealand students from our sister school.

All students take a test on their first day and are put in the best class for their level. Students also have weekly tests, get monthly progress reports and receive a certificate when they finish the course.

NZIE Courses

- ◆ **General English Language Course**
- ◆ **Working Holiday English Course**
- ◆ **Exam Preparation English language Course**
- ◆ **Sport & General English Language Course**
- ◆ **Rugby & General English Language Course**
- ◆ **Group Programmes including English Language & Sports or Activities**



NZIE Support Service and Facilities

- ◆ **Accommodation arrangements**
- ◆ **Student counselling**
- ◆ **Airport pick-up**
- ◆ **First day orientation**
- ◆ **VISA help**
- ◆ **Working holiday support**
- ◆ **Help with university or tertiary school study applications**
- ◆ **Computer facilities and internet access**
- ◆ **Common room and kitchen**

Extra Opportunities

NZ Institute of English is a language school with a difference – study English and meet New Zealand students from our sister school NZ Institute of Sport. And if you like sport, you can join NZ students for sporting and outdoor activities, camps and training. There are 150 New Zealand students studying on campus so you have a wonderful opportunity to mix with international students and local students. We encourage you to practice English through a series of sports, outdoor, cultural and social activities.



New Zealand Institute of English under the New Zealand Institute of Sport is a registered and accredited provider of NZQA approved tertiary programmes and English programmes. The institute is also a signatory to the Ministry of Education Code of Practice for The Pastoral Care of International Students.



GENERAL ENGLISH LANGUAGE COURSE

◆ Intensive English Course (Part time / Full time) ◆

This course helps you to improve your English grammar, reading and writing and communication skills. You can study full time or part time. The school has a range of textbooks and workbooks which are used in the class with real-life materials. There is a focus on communication and classes will help you with pronunciation and fluency. Because NZ Institute of English is located within the New Zealand Institute of Sport the two schools sometimes have activities together and English students can practice speaking English with native speakers. Students will receive a certificate of completion at the end of their course (2+ weeks). They will also get a report explaining their English ability and the progress they have made in English.

Course Costs / Dates

Course Start Date:	Every Monday	
Course Duration:	1 week to 1 year	
Course Hours:	25 hours intensive English per week (9:00-12:00 & 13:00-15:00) 15 hours intensive English per week (9:00-12:00)	
Registration Fee:	NZ\$130	
Tuition Fees:	25 hours intensive English NZ\$320/week for 1-12 weeks NZ\$310/week for 13-24 weeks NZ\$300/week for 25+ weeks	15 hours intensive English NZ\$250/week for 1+ week



EXAMINATION PREPARATION COURSE

◆ Intensive IELTS Course (Academic / General) ◆

The intensive IELTS Course is designed to prepare students for the IELTS exam and/or future study at universities or polytechnics. You will improve your skills (listening, reading, writing, and speaking) and learn important exam strategies and techniques so that you will be prepared when you take the IELTS test.

- ◆ You must have upper-intermediate/advanced English before you can start the IELTS preparation course.
- ◆ If you have already taken the IELTS test you need to show us your certificate.
- ◆ You have to take an NZ Institute of English test before you can take this course to make sure it is suitable for you.
- ◆ Please note that you can not take the exam at NZ Institute of English but we can organise this for you

Course Costs / Dates

Course Start Date:	Most of Every Monday
Course Duration:	Min of 8 weeks
Course Hours:	25 hours intensive English per week (9:00-12:00 & 13:00-15:00)
Registration Fee:	NZ\$130
Tuition Fees:	NZ\$320/week



WORKING HOLIDAY ENGLISH LANGUAGE COURSE

◆ Intensive Practical English Course (Part time / Full time) ◆

This course is similar to General English but is aimed at helping students on working holiday visas to find work after studying. This course helps you to improve your English grammar, reading and writing and communication skills. There are classes on writing a CV (Curriculum Vitae) and advice on how to find jobs in New Zealand. There is a focus on work vocabulary, communication, pronunciation and fluency.

Working Holiday Opportunities

- ◆ TRAVEL ARRANGEMENTS WITHIN NZ
- ◆ CURRICULUM VITAE (CV) SUPPORT
- ◆ HELP TO FIND VOLUNTEER WORK
- ◆ FARM STAY



Course Costs / Dates

Course Start Date:	Every Monday	
Course Duration:	1 week to 1 year	
Course Hours:	25 hours intensive English per week (9:00-12:00 & 13:00-15:00) 15 hours intensive English per week (9:00-12:00)	
Registration Fee:	NZ\$130	
Tuition Fees:	25 hours intensive English NZ\$320/week for 1+ week	15 hours intensive English NZ\$250/week for 1+ week

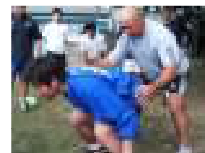
RUGBY & GENERAL ENGLISH LANGUAGE COURSE

◆ Improving Rugby Skills ◆ Professional Coaching ◆ Improving Fitness ◆

This course helps you to improve your English and your rugby skills! You will have professional coaching and can play for Wellington's local club teams (February and August). You learn English in the mornings (15 hours per week) and learn rugby skills and fitness (strength, power, speed, agility, endurance, coordination, balance, flexibility) with training experts in the afternoon. Talk to us about this course!

Course Costs / Dates

Course Start Date:	Every Monday (February – August)	
Course Duration:	1 week to 30 weeks	
Course Hours:	15 hours intensive English per week (9:00-12:00) + Afternoon rugby programme (14:00-16:00)	
Registration Fee:	NZ\$130	
Course Related Cost:	NZ\$600	
Tuition Fees:	NZ\$500/week for 1-3 weeks NZ\$450/week for 4-9 weeks NZ\$440/week for 10-19 weeks	NZ\$430/week for 20-29 weeks NZ\$420/week for 30+ weeks



Sample timetable

	MON	TUE	WED	THU	FRI
9:00-12:00	English Lesson	English Lesson	English Lesson	English Lesson	English Lesson
13:00-14:00					
14:00-15:00	NZIS Rugby Training	Weight Training	Speed Training	Weight Training	Flexibility/Body Balance Training
15:00-15:30					
16:00-17:00					
18:00-20:00		Club Rugby Training		Club Rugby Training	

* Rugby game on every Saturday



EXTRA OPPORTUNITIES

◆ NZ Institute of English - a language school with a difference! ◆

◆ SPORTS AND OUTDOOR ACTIVITIES*



The NZ Institute of English has a sister school, the New Zealand Institute of Sport. So, if you want to, you can join New Zealand students in sporting, outdoor activities and cultural events. The New Zealand Institute of Sport has approximately 150 New Zealand students in Wellington studying sport. NZ Institute of English students and NZIS students study in the same building which means that international English students have a lot of chances to meet New Zealand students and join NZIS activities. Some of the experiences are:



- **Outdoor activities:** Camps, Hiking, Rock-climbing, Kayaking, Dancing, Sports Massage, Horse-riding, Aerobic Exercise, Weight Training
- **Sports activities:** Swimming, basketball, softball, volleyball, tennis, sports exchanges with other NZIS sites
- **Cultural Activities:** Museum trips, inter-school parties and social nights, Pacific performance groups

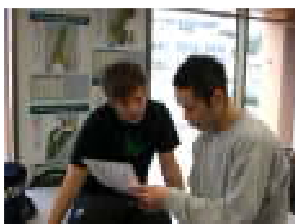
◆ SPORTS CLUBS*

We can also help you to join a New Zealand sports club too. For example, if you like tennis we can help to find a good club in Wellington where you can play once or twice a week*. The kinds of sports clubs we can help with are:

- ◆ Volleyball
- ◆ Tennis
- ◆ Golf
- ◆ Basketball
- ◆ Soccer
- ◆ Rugby
- ◆ Cricket
- ◆ Basketball
- ◆ Tennis
- ◆ Swimming



◆ LANGUAGE EXCHANGE*



New Zealand has many people from different countries and many Kiwis like learning other languages. A language exchange is a good way to meet people and to learn English. You teach a New Zealand person your language for 1-2 hours a week and they teach you English. You will still need to study English in class but a language exchange can help you improve faster. If you are interested in having a language exchange when you come to New Zealand, the New Zealand Institute of English will help you to organise one if possible.

**All of these activities are subject to availability and may cost extra*

WORKING HOLIDAY OPPORTUNITIES

◆ NZ Institute of English - a language school with a difference! ◆

◆ TRAVEL ARRANGEMENTS WITHIN NZ*



Wellington is in the middle of New Zealand which means that it is easy to travel to other cities and towns by train, bus or ferry.

NZIE can:

- give you information about other cities in NZ
- show you how to make bookings and buy tickets
- take you to the information centre

◆ CURRICULUM VITAE (CV) SUPPORT*

We are able to help students write and layout their CVs. A curriculum vitae or CV is a document which explains your education and work experience. You need a CV to apply for jobs in New Zealand. NZ Institute of English can help you to:

- organise your information well
- use correct grammar and spelling
- make your CV clear
- email or print your CV for jobs



INSTITUTE OF ENGLISH

◆ HELP TO FIND VOLUNTEER WORK*

Working is a great way to improve your English. NZ Institute of English can help you to find a volunteer job. This means that you won't get paid but you will be helping other people or animals. Usually some kind of experience is necessary but not always. The kinds of jobs that you might be able to get are working with animals, helping older people or fundraising.

◆ FARM STAY



New Zealand has a lot of beautiful countryside and there are a number of farms around Wellington which offer farm stays. A farm stay is when you visit a farm for a weekend (2 days) or a week (7 days) and work on the farm with the farmer and their family. This is a great chance to see farm animals and to really experience New Zealand! You pay the farm stay family directly but we can help you to find a farm stay and help you to call the family.

**All of these activities are subject to availability and may cost extra*

ACCOMMODATION

◆ Homestays ◆ Student Hostels ◆ Backpackers ◆ Hotels ◆

◆ HOMESTAYS

Homestays are an excellent way to meet New Zealand people and learn about NZ culture. You live with a New Zealand family, learn about New Zealand life and practice your English at home. NZIE will pick you up at the airport and take you to your NZ family.

At your homestay you will have:

- ◆ breakfast and dinner (Monday – Friday)
- ◆ breakfast, lunch and dinner (Saturday – Sunday)
- ◆ your own room
- ◆ a desk
- ◆ a comfortable bed
- ◆ a wardrobe and drawers
- ◆ a heater



Homestay Registration Fee NZ\$180
Homestay Fees NZ\$200/week**
Under 18? You should stay at arranged homestays or talk to NZIE

◆ STUDENT HOSTEL

You can also stay at a student hostel.

You will have:

- ◆ your own room
- ◆ your own bathroom (toilet, basin and shower)
- ◆ double bed (sheets, pillows, bedding and towels supplied),
- ◆ a fridge, a wardrobe and a desk
- ◆ areas to meet other people
- ◆ a TV room with Sky TV
- ◆ a shared laundry and kitchen



Accommodation Registration Fee NZ\$180
Hostel Fees NZ\$200/week**

◆ YOUTH HOSTEL / BACKPACKER HOSTEL

You can also stay at a youth or backpacker hostel. These are usually for people travelling through the city for shorter periods of time. You usually share a room with 3 other people who come from all over the world. Each hostel has a big kitchen for everyone to use and a lounge where everyone meets to spend time together.



◆ HOTELS

If you are only in Wellington for a short time then it is also possible to stay in a hotel. Wellington has a lot of hotels in the city centre. The rooms are all different and so the prices are very different. It depends on the quality of the hotel and the size of the room. We can help you to find a hotel that suits you.

**** Please note:** Accommodation costs can change

INTERNATIONAL INFORMATION SHEET

◆ NZ Public Holidays ◆ Insurance ◆ Immigration ◆

NEW ZEALAND PUBLIC HOLIDAYS

● New Year	01 January	● ANZAC Day	25 April
	02 January	● Queens Birthday	Early June
● Wellington Anniversary	19 January	● Labour Day	Late October
● Waitangi Day	06 February	● Christmas Day	25 December
● Easter Holiday	Mid April	● Boxing Day	26 December

CODE

New Zealand Institute of English has agreed to observe and be bound by the Code of Practice for the Pastoral Care of International Students published by the Minister of Education. Copies of the Code are available on request from this institution or from the Ministry of Education website at <http://www.minedu.govt.nz>

MEDICAL & TRAVEL INSURANCE

International students must have appropriate and current medical and travel insurance while studying in New Zealand.

IMMIGRATION

◆ Permit requirements ◆ Visa requirements ◆

It is required by the New Zealand Immigration Service that if an international student wishes to study for a course lasting longer than 3 calendar months, the student must hold a current student (or limited purpose) visa/permit which is endorsed with the institution at which the student is seeking to enrol and the course of study the student intends to undertake. The student could only enrol for a single short course if the student is holding a current temporary (or limited purpose) permit of any type (including visitor's visa/permit).

It usually takes 4-8 weeks to process your visa application, and note that student visa applications will require payment of fees and evidence of financial ability. For full details of visa and permit requirements, advice on rights to employment in New Zealand while studying and reporting requirements are available through the New Zealand Immigration Service, and can be viewed on the website at <http://www.immigration.govt.nz>.

ACCIDENT INSURANCE

The Accident Compensation Corporation (ACC) provides accident insurance for all New Zealand citizens, residents and temporary visitors to New Zealand, however you may still be liable for all other medical and related costs. Further information can be located on the ACC website at <http://www.acc.co.nz>

ELIGIBILITY FOR HEALTH SERVICES

Most international students are not entitled to publicly funded health services while in New Zealand. If you receive medical treatment during your visit, you may be liable for the full costs of that treatment. Full details on entitlements to publicly-funded health services are available through the Ministry of Health, and can be viewed on their website at <http://www.moh.govt.nz>

